



**CONNECT**  
NETWORK

together for women and children at risk

2013/4  
ANNUAL  
REVIEW





# CELEBRATING THE 10TH YEAR OF CONNECT NETWORK COMMUNITY

More than 100 churches and NPO's working together with women and children at risk to see families thrive and communities transformed in Cape Town.

2004



Connect Network founded  
**15 members**

2005



Registered as an entity  
**45 members**

2006



QIS piloted for global roll out  
**60 members**

2007



First six focus groups activated.  
QIS goes live  
**75 members**

2008



First child safe community development model established  
**82 members**

2009



Connect website and online platform goes live. Champions for children piloted  
**83 members**

2010



First Child friendly church conference. Thirteen Safe community initiatives and STOP trafficking campaign throughout the World Cup soccer  
**91 members**

2011



Research done on churches, child protection, and network impact  
**109 members**

2012



Three goals for collaboration: children, education, women established  
**115 members**

2013



Connect Advocacy strategy established  
**107 members**

LOCATE

CONNECT

ENGAGE

EQUIP

COLLABORATE

SOLUTIONS

# NOTE FROM THE BOARD

This year Connect Network and our partners have faced tough obstacles. It has been a real encouragement to see the resilience of network affiliates as they continue to serve women and children at risk in an increasingly challenging environment. Looking back over the past 10 years we can see how the network has steadily grown and been blessed by God's faithfulness.

Connect Network NPC (the registered entity that serves the network affiliates) was hit hard during 2013 by the funding environment, leadership succession, legislative compliance all at once, this influenced us to make structural changes. These pressures resulted in the unfortunate loss of some staff members. If used constructively, such challenges will enable an organization to mature. This review is evidence that despite these challenges, the network continued to do significant collaborative work for women and children at risk across our city, proving a remarkable intention for people to work together.

As you look through this review and see some 'fruit' of the network, remember this is a culmination of years of relationship building, planning, prayer, investment and the participation of many people bringing their skills and gifts together over a ten year period. The list of people goes on and on and this is true evidence of a collective vision to see children thriving in families and communities transformed.

Connect Network has now developed into a platform upon which several amount of 'applications' can be run. A community of compassionate people, inspired by their faith, who are well organized and united in purpose is the best possible platform on which to run innovative, far reaching collaborations that will assist women and children in their greatest time of need.

I would like to thank all our funders for continuing to support our work, our staff of 2013 for their dedication, skill, expertise, commitment and hard work, and the ten appointed network members, together with my board colleagues, who provided governance to the registered Non Profit Company in very challenging circumstances. Together we ARE all making a difference to the lives of women and children.

Erica Pippert  
Chair of Connect Network Board



*"Religion that God our Father accepts as pure and faultless is this: to look after orphans and widows in their distress and to keep oneself from being polluted by the world"*  
James 1: 27 (The Bible)

# DEVELOPING NURTURING AND PROTECTIVE ENVIRONMENTS FOR CHILDREN

Connect Network Affiliates work across communities in Cape Town to ensure that the safety and rights of children are upheld. Activities include Child Advocacy, Child Care Forums and Child Protection Training. This year Connect Network affiliates improved the safety of environments that children live in by working together collaboratively. Some specific achievements include:

## **SAFE COMMUNITIES:**

Child Care Forums are one way to see the power of collaboration as communities work together for the sake of their children. Connect Network affiliates worked together at developing Child Care Forums in four areas: Kayamandi, Lansdowne, Fisantekraal and Paarl.

## **Activities included:**

- Eight affiliates participated in Resilient Kids training which equips workers for their service to orphans and vulnerable children .
- Each community forum ran holiday and homework clubs to give children a safe space to be when school is out.

## **CHILD ADVOCACY:**

Connect Network's Advocacy strategy was developed this year and include three overarching areas that the network will focus on, namely: Every child in a family, Education support and Funding blocks that affect our sector. In our advocacy strategy we will encourage children to participate where appropriate. We will advocate to churches, policy and the general public.

## **Activities included:**

- The advocacy strategy was determined and a working group established.
- A service of Hope and Blessing was hosted in more than 10 churches across the city during child protection month.
- Most affiliates participated in the Green Ribbon Child Protection Campaign during the month of May.
- A working group was established to write the Children's Act Manual for Churches.  
(Based on research and consultations of two previous years)
- 24 cyclist formed part of the Ride for Hope Team, to raise awareness for child protection. (Argus Cycle Tour)
- Partnering with Community Chest to share networking for children within three Southern Cape and Boland areas.
- The Connect in Cape Town Campaign raised awareness of the network at 15 events, including contributing to two radio interviews and a newspaper article.



*"James is 12 and in grade 4 (for the second time), he is HIV+ and receives anti-retroviral medication from the local clinic. He lives in a peri-urban community of Cape Town; this particular community (as with many areas in our city) is rife with domestic violence, unemployment, alcohol abuse, teen pregnancy and school drop –out. His mom died when he was a baby and his father is not involved with his life, so he lives with his grandmother, an aunt and her two children.*

*James was invited to attend a camp being run by a 'safe-community children's club, his gran was concerned about him going to camp due to his HIV status. Because this community has a child-care forum (CCF), a social worker in the forum counseled the gran to be at ease and see the benefit of sending him to camp. After the camp, trust was built between the family and the CCF. The social worker assisted his gran with enrolling him into school for his repeat of grade 4. The Homework club run by another organisation assists him with his homework. James now also attends a children's club every Saturday and his gran attends a support group for parents of children 'falling out' of school. This story demonstrates the power of collaboration through Child Care Forums, this community is now committed to a vision of being a safe community for children" Kay Lorentz, Children's Networker*

# DEVELOPING OPPORTUNITIES FOR IMPROVED EDUCATION

The South African schooling system is in crisis and those that suffer the most from the lack of educational opportunities are children living in poverty. Connect Network affiliates are committed to providing learners with opportunities for additional education support by providing and equipping safe spaces to do their homework. As a network, our affiliates provide tutoring and after school care as well as support for Early Childhood Development centres.

## 2013-14 Achievements

This year Connect Network affiliates focused on strengthening what had been initiated in previous years with the main emphasis on building a best practice model for Homework Clubs, setting a resource base for the network affiliates and equipping Early Childhood Development crèches to adhere to registration criteria.

- Six small grants were awarded to affiliates who passed the qualifying criteria.
- These grants were used to purchase necessary resources ranging from books, to computer supplies, to desks, to safety features for buildings.
- Part or all of 53 network affiliates focused on their work on education. Eight engaged in equipping ECD centres, six are schools and the rest offer after school support through Homework clubs.
- 21 Homework clubs and schools received relevant text books to assist children through our partnership with Bayer (PTY) LTD.
- Most education focused affiliates received at least one site visit from a networker, during which needs were assessed and relationships built.
- Six trainers were equipped in the “Unlimited Child” curriculum and use of educational toys for Early Childhood Development.
- Two best practice Homework club network meetings saw twenty-two workers from thirteen Homework clubs working on a best practice model for the network.
- 50% of Early Childhood Development Centre's (ECD's) in the network have reached registration compliance by the Department of Social Development.
- Nine ECD organisations/networks attended Safer Spaces training.
- 19 organisations attended Tutor training.



*“There was no safe space in our area for children to come after school to do their homework and so we renovated an old building structure and used our small grant to install an alarm, purchase stationery for learners and computer cables for the donated computers. Now the children have a safe place to do their homework and receive the necessary support”*  
*Prochorus Jonkershoek.*

*“We have been operating in the Paarl area since 1999 and offer support to 31 crèches and 8 homework clubs in Mbekweni. We are mentoring these groups to be compliant with the Department of Social Development’s requirements. Our small grant was used to host workshops to achieve this.”* Jolanda Van der Lingen, Valcare Trust

***“Education is the most powerful weapon which you can use to change the world.”***  
**Nelson Mandela**





# EMPOWERING MOTHERS OF VULNERABLE CHILDREN TO BE RESILIENT AND RESOURCEFUL

Children are vulnerable when their mothers are at risk of crime, abuse, disease or poverty. Connect Network affiliates focus on women in their time of crisis and aim to empower them with knowledge, skills and support so that they can protect themselves and their children. Our affiliates focus specifically on supporting teen mothers, crisis pregnancy centres and surviving of violence against women.

Relationships of trust are the social capital that builds networks. Based on the premise that 'In order to work together we need to know and trust each other', Connect Network affiliates who work with women at risk focus on building organizational relationships among one another. Once these are in place, their ability to streamline their services to mothers of vulnerable children will be strengthened.

## 2013-14 Achievements

- NewDay United hosted a two-day caregiver's retreat for more than 20 managers and staff, representing 15 organisations, working with women.
- The Crisis Pregnancy Focus group completed a South African focused adoption brochure to help women as they make a choice for their unborn baby.
- All women focused organisations received at least one site visit by a networker.
- "Because they're Worth it" advocacy workshop was hosted by Micah Network for 15 leaders of women focused organisations.
- Equipped to Serve (ETS) training was done to equip organisations to use the ETS counselling method.
- Counseling capacity of five women-focused organizations was increased through 'Equipped to Serve' training. 26 staff and four trainers were trained from five organisations.



*"There can be no keener revelation of society's soul than the way in which it treats its children."*  
**Nelson Mandela**

*Many ladies find themselves in shelters for abused women and their children due to domestic violence. Through the network, five of the ladies who were at St Anne's homes were able to take their first steps out of the crisis cycle and onto the road to healing. A CareHaven Crèche offered to take care of the children at no charge while the moms were at work. They have since left the shelter and continue to support themselves through the job opportunity they received. All shelters face similar challenges, e.g. lack of funding, housing after a shelter, employment & skills development, placing children in schools, accessing medical services. We have to continue networking to improve the bigger picture. Sadly, domestic violence is on the increase."* Linda Walters  
Women's network co-ordinator

# QIS REPORT: NETWORKING FOR CAPACITY

## Quality Improvement System (QIS)

To strengthen the systems, structures and processes of Connect Network affiliates, we use the Quality Improvement System (QIS) organisational capacity building tool. QIS provides Biblical principles and international best practice standards in six module areas: Project Planning & Design, Governance, Financial Accountability, People Care, Child Protection and Child Wellbeing. By strengthening our affiliates' systems, structures and processes, they can ultimately improve the quality of care they provide to children and women at risk.

## 2013-2014 Achievements

During 2013 three QIS modules were successfully hosted by the Connect Network: People Care (March 2013), Child Protection (June 2013) and Child Wellbeing (September 2013). Six organisations completed the QIS cycle and are ready for the next verification early in 2015, with six more organisations only needing to complete the last three modules to be ready for verification. At least 13 organisations have done one or more QIS modules and five organisations received mentoring in People Care and Child Protection. The Project Planning and Design module has also been successfully registered with SACSSP to give social workers who complete this module during 2014 the opportunity to obtain 4 CPD points per day.

## Comments from QIS participants

- *"Clear ideas to use with staff especially as I will soon be taking on the lead management role. Very informative and encouraging"*  
Participant who attended the Staff Care module, March 2013
- *"It was great to learn more about child protection and to get to know people from other organisations. Awesome workshop!"*  
Participant who attended the Child Protection module, June 2013
- *"After the child participation talk, the 'download' happened for me in terms of marrying theory and reality. So interesting. Well-informed and interactive"*  
Participant who attended the Child Well-being module, September 2013

*"There is nothing like returning to a place that remains unchanged to find the ways in which you yourself have altered." Nelson Mandela*



# CONNECT NETWORK DONORS

## Donors March '13-February '14:

Accredited BEE Solutions (Pty)Ltd  
Alternative Prosperity  
Baker Tilly Greenwoods Chartered  
Accountants  
Bayer (Pty) Ltd  
Bella Donation  
Bill & Sabra Reichardt  
Helen Calverley Trust (NedGroup  
Trust)  
CBS Manufacturing Pty Ltd  
Cebano Consultants  
Children's Campaign Trust  
Ciolli Ready Mix Pty Ltd  
The Community Chest of the  
Western Cape  
Dee Moskoff  
Garnet & Virginia De la Hunt  
GP Koning (Pty)Ltd  
HT Gormley Testamentary Trust  
Ivan Moskoff Financials  
Jennifer Lopes  
Jurie Serfontein  
Kelway  
Marais Muller Management Trust

Rudolfo Bruno  
Super Camps UK  
St. Armands College Belguim  
St. Michaels Church Paris  
Viva North America-Anonymous Donors  
Vivian Zimmerman  
Wendy Burgers Education Gift


## Argus donors:

Adri Punt  
Alexandre Rodrigues  
Anita Adendorff  
Anthony Rissik  
Barney Singer  
Ben Prior  
Chris Wagner  
Dagmar Schmidt  
David & Karin Morgan  
Deborah McBeth  
Dee Moskoff  
Estelle Jordaan  
Helen Duncan  
Ian Barbour  
Janet Keet  
Jeremy Hazel  
Julie Hodgson

Karin Viviers  
Lisa Marqua  
Lizl Hobson  
Lynn Swart  
McChesney  
Megan Conrad  
Monica Davidson  
Mosiuoa Lekota  
N De klerk  
NewDay  
Peter Williams  
Ricardo Wyngaardt  
Rita Garrod  
Rosemary Humphreys  
Susan Weaver  
Tracy Watkins

## Calender page sponsor:

Bill & Sabra Reichardt  
Camp Africa  
Cape Agricultural Products (Pty) Ltd  
Ciolli Ready Mix  
Home Life Construction  
Incline Marketing Solutions (Pty) Ltd  
Ivan Moskoff Financials (Pty)Ltd  
Nolands  
Purple Line Plastics Pty Ltd  
Robosol  
Spinnaker Information Management  
Services  
The Community Chest of the Western Cape



*"And as we let our own  
light shine, we unconsciously  
give other people permission  
to do the same."  
Nelson Mandela*

*"The reason Children's Campaign continue to support Connect is that they are very efficient in supporting and bringing together the caring community of the Western Cape thus providing a cost effective support for the many members of the network.*

*Ecc 4: 9-10 Two are better than one because they have a good return for their work. If one falls down his friends can help him up. But pity a man who falls and has no one to pick him up". David Morgan CCT*



# CONNECT NETWORK COMMUNITY

360 Transformation  
ACVV Bright Lights  
ACVV Somerset West  
African Legend  
Adaliah Care  
Aids Resource Centre  
Arise Children's Ministry  
Baby Safe  
Beautiful Gate Ministries  
International  
Beautiful Gate South Africa  
Beauty for Ashes  
Bell Valley Initiative  
Bridges of Hope SA  
Carehaven Salvation Army  
Choices Centre  
Common Good Foundation  
Community in Action  
Eagles Nest Ministries  
Emyezweni  
Ethel's Place Youth Care  
Centre  
Family Outreach Ministries  
Fikelela Aids Project  
Friends of Child Protection  
Hand of Hope (Joyce Meyer)  
Heatherdale Children's Homes  
Helderberg Development  
Centre  
Home from Home Trust  
Home of Compassion  
Ministries  
Hope Prison Ministries

Immanuel's Haven  
Izandla Zethemba  
Ikhaya Le Themba home  
Based Care  
Jabulani Africa Ministries  
Joya Homes and Educare  
Company  
Jubilee Health Centre  
Khulanathi Educare Centre  
Kibwe Kids  
Kohin  
Kuyasa Horison  
Empowerment  
L' Abrie de Dieu Safehouse  
Legacy Community  
Development  
Lerato's Hope  
Lilitha Educare Centre  
Lighthouse Ministries  
Little Angels  
Living Hope  
Mascassar Kids Craft Club  
Mater Domini Home  
Matla-A-Bana  
MENUCHAH - Place of Rest  
Mercy Aids  
Metro Kids Africa  
Missing Children SA  
Mould Empower Serve  
Ncedeluntu Sanctuary Trust  
NewDay  
Nthando Home of Safety  
Open Schools Worldwide

Options Care Centre  
Percy Bartley House  
Phambili Community  
Development  
Philippi Children's Centre  
Philippi Trust SA  
Philisa Abafazi Bethu  
Place of Hope  
Procure  
Prochorus Community  
Development  
Proud2B Me Foundation  
Rainbow of Hope  
Rock Crisis Centre  
Ruach Counselling Centre  
S-Cape (Justice Acts)  
SA Cares for Life  
Safeline Child Abuse  
Prevention & Treatment  
Centre  
Sarfat Community Projects  
Scripture Union  
Seasons Crisis Pregnancy  
Centre  
Senecio Support  
SHARE Adult Education Centre  
Sikhula Sonke  
Sir Lowry's Pass Community  
Empowerment Project  
Sisters Incorporated  
Somerset West United Church  
Soul Action South Africa  
SouthEnd Community Centre

Sport Implementation  
Foundation  
St. Anne's Home  
St. Peter's Church Mowbray  
Straatlig  
Straatwerk  
Tereo Project  
Thando Trust  
Thokozani Brothers  
The King's Smile  
The Pearl Community  
Development Project  
The Phoebe Care Centre  
The Salvation Army  
The Sozo Foundation  
The Warehouse  
Thembalitsha Foundation  
Think Twice  
Touch Community Network  
Trinity Children's Centre  
True North  
Ubomi Charitable Trust  
Umnqophiso Primary School  
United Christian Student  
Association  
uThando leNkosi  
Valcare Trust  
Village Care Centre  
Vision Afrika  
Whale Coast Media  
Women of Destiny

Together serving more than 295 000 women and children at risk

# CONNECT NETWORK PARTNERS



360 Transformation partnered with Connect Network to provide governance through their director being the board chairperson of Connect NPC.



Alternative Prosperity partnered with Connect Network to externally verify QIS candidates in 2013.



Children's Campaign Trust is a social enterprise that provides operational funding for Connect Network.



Community Chest partner to financially support Connect Network operations and to provide a platform for network leaders to network



Connect Network partnered with CHE to provide supervision and project placement for social work interns.



ETS partners with Connect Network for "crisis counselling" training in South Africa.



FHCF partnered with Connect Network to employ one of their congregants as the Children's Network Co-ordinator for 'Safe Communities' in goal one of the network.



GoLD partnered with Connect for the Education Goal's online resource hub: 'Linked4U', as well as the 'Equipped to Serve' crisis counseling training for their peer educators.



Scripture Union partnered with Connect Network to provide a Cape Town office and venue for network events.



Thando Trust partnered with Connect Network's 'Safe Communities' in goal one, by providing the 'SuperClub' community development model.



UCSA partnered with Connect Network to provide governance through their director being on the board of Connect NPC.



VIVA is our global partner for network development and Quality Improvement System.

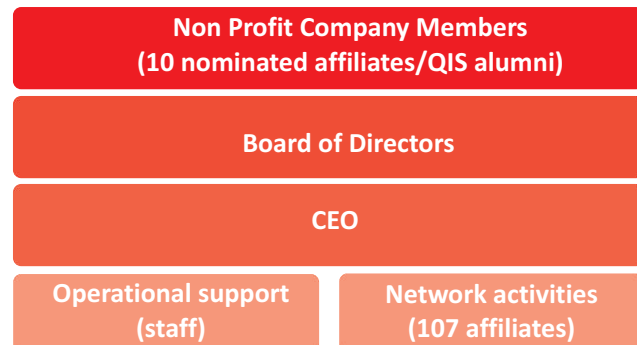


# GOVERNANCE

In order to be legally compliant to the Companies Amendment Act of 2011 Connect Christian Network Non Profit Company needed to amend its founding documents.

The following changes were made:

- The board no longer serves as the highest authority of the organization.
- The staff no longer head up the goals of the network.
- Through a nomination process ten network affiliates were voted in and now form the 'members' of the Non Profit Company.
- All other network participants are now called affiliates.
- The members represent the affiliates in decision making for the network.
- The members appoint the board of directors.
- The board of directors is the legally registered governors of the organisation.
- The board of directors provides fiscal responsibility and appoints the CEO.
- The CEO provides leadership, oversees all aspects of the network and appoints network staff.
- The network office provides administration and support services to the network.



## NPC Members



Beautiful Gate - **Vaughan Stannard**



Phambili Community Development -  
**PS Colin Van Wyk**



Metro Kids Africa - **James Senior**



Living Hope - **Avril Thomas**



Village care Centre - **Mary Lottriet**



SOZO foundation - **Anton Cuyler**



Sikhula Sonke - **Mdebuka Mthwazi**



Think Twice - **Moussa Mulamba**



Arise Children's Ministry - **Steven Nicholson**



Tereo Project - **Naomi Ferreira**

## BOARD



Peter Williams  
Financial and Fundraising  
Governance



David Nefdt  
Member Representative:  
Research Governance



Erica Pippert:  
Member Representative:  
Chairperson



Jurie Serfontein  
Human Resources  
Governance



Dee Moskoff:  
Network Development &  
Public Relations  
Governance



Nicole Serfontein:  
Legal and Cross-Sectorial  
Partnership Governance

## STAFF



From left to right

Front row: Joseph Jacobs (Director), Priscilla Muller (Office Administrator), Beverley Stoffberg (Finance Manager), Kay Lorentz (Children's Network Co-ordinator).

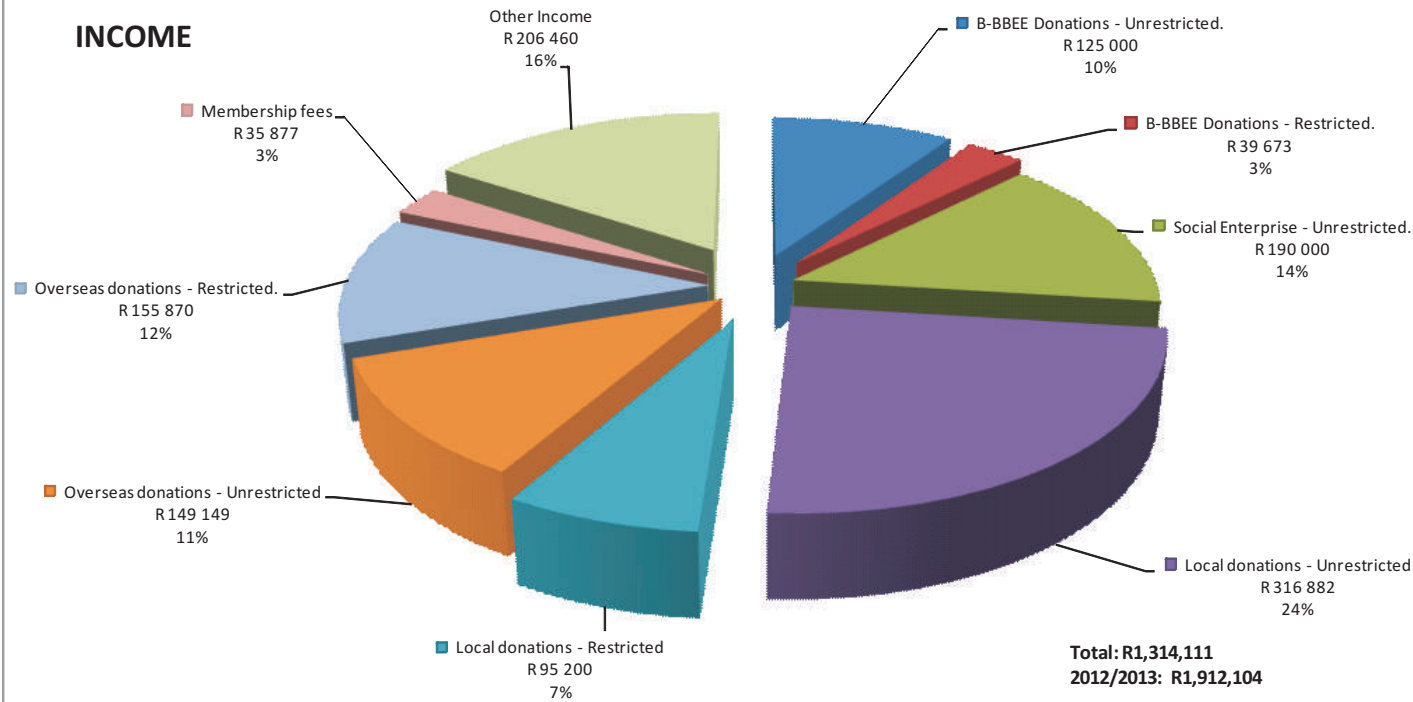
Back row: Laura Singh (Education Network Co-ordinator), Michelle Meinesz (Capacity Building Manager), Maryanne Sangster (Finance Administrator), Linda Walters (Community Networker), Norma Theron (ETS Co-ordinator), Sophie Olivier (Network Communications Co-ordinator), Heidi Segal (Education Network Manager).

*"A good head and a good heart are always a formidable combination." Nelson Mandela*



# FINANCIALS

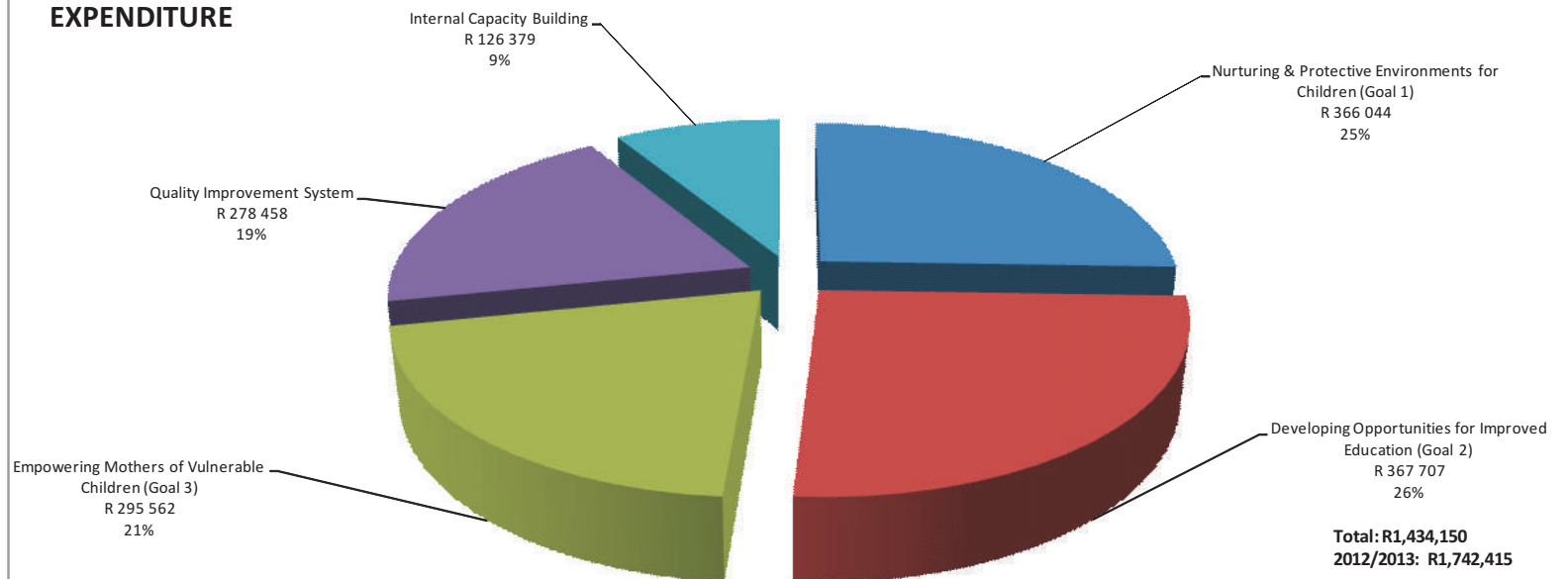
## INCOME



*"If there are dreams about a beautiful South Africa, there are also roads that lead to their goal. Two of these roads could be named goodness and forgiveness".*  
**Nelson Mandela**



## EXPENDITURE





**Registered as:**

**Connect Network NPC**

**2006/012058/08**

**NPO: 040-987**

**PBO:930031187 (Section 18A status)**

**Tel: +27 (0) 21 8529900 | Post Po Box 1005, Somerset West 7129, South Africa | Email [info@connectnetwork.org.za](mailto:info@connectnetwork.org.za) | Web [www.connectnetwork.org.za](http://www.connectnetwork.org.za)**

**\*Photos of children used with permission and in accordance with Connect Network's Child Protection Policy. Front and back cover pictures courtesy of the Senekal and Kynastan families.**